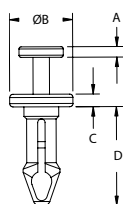




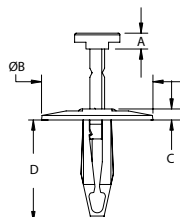
SNAP RIVETS

TR/TRM Series
Tough Snap Rivet

Type 1



Type 2



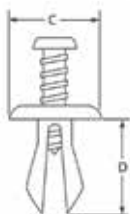
Specifications:

- Material: Type 1: Nylon 6/6, Flame Class: UL94V-0
Type 2: Nylon 6/6, Flame Class: UL94HB
- Color: Black

Features:

- TRM: Heat stabilized
- TR: Impact Modified

Item No.	Hole Dia.		Panel Thickness		A		Ø B		C		D		Type	Pack Qty.
	In	mm	In	mm	In	mm	In	mm	In	mm	In	mm		
TRM-1	.097 - .103	2.5 - 2.6	0.160 - 0.180	4.1 - 4.6	0.040	1.0	0.190	4.8	0.060	1.5	.345	8.8	1	1000
TRM-2	.106 - .112	2.7 - 2.8	0.080 - 0.105	2.0 - 2.7	0.050	1.3	0.218	5.5	0.060	1.5	.300	7.6	1	1000
TRM-3	.122 - .128	3.1 - 3.3	0.105 - 0.130	2.7 - 3.3	0.050	1.3	0.218	5.5	0.060	1.5	.320	8.1	1	1000
TRM-4	.122 - .128	3.1 - 3.3	0.130 - 0.155	3.3 - 3.9	0.050	1.3	0.218	5.5	0.060	1.5	.345	7.6	1	1000
TRM-5	.122 - .128	3.1 - 3.3	0.155 - 0.180	3.9 - 4.6	0.050	1.3	0.218	5.5	0.060	1.5	.370	9.4	1	1000
TRM-6	.122 - .128	3.1 - 3.3	0.240 - 0.265	6.1 - 6.7	0.050	1.3	0.218	5.5	0.060	1.5	.455	11.6	1	1000
TRM-7	.144 - .154	3.7 - 3.9	0.265 - 0.290	6.7 - 7.4	0.050	1.3	0.300	7.6	0.060	1.5	.470	11.9	1	1000
TR-1	.193 - .205	4.9 - 5.2	0.059 - 0.181	1.5 - 4.6	0.100	2.5	0.283	7.2	0.045	1.1	.445	11.3	2	1000
TR-2	.248 - .276	6.3 - 7	0.098 - 0.350	2.5 - 8.9	0.140	3.6	0.985	25.0	0.098	2.5	.898	22.8	2	1000
TR-3	.250 - .276	6.4 - 7	0.098 - 0.315	2.5 - 8.0	0.110	2.8	0.585	14.9	0.079	2.0	.897	22.8	2	1000
TR-4	.315 - .325	8 - 8.3	0.118 - 0.315	3.0 - 8.5	0.091	2.3	0.585	14.9	0.106	2.7	.830	21.1	2	1000

TPSR/USR Series
Two Piece Screw Rivet

Specifications:

- Material: Nylon 6/6, **Nylon 6
- Flame Class: UL94V-2

Features:

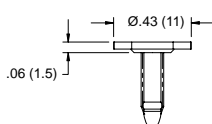
- For heavy duty applications
- Ideal for outdoor environments
- Resistant to corrosion, oil, abrasion, & most chemicals

* Screw Material: Acetal UL94 HB; Grommet Material: Nylon 6

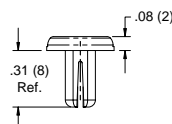
** Nylon 6



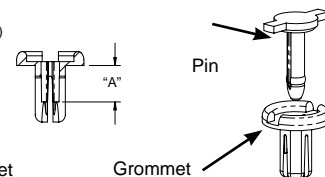
Item No.	Color	Hole Dia.		Panel Thickness		Ø C		D		Pack Qty.
		In	mm	In	mm	In	mm	In	mm	
USR-1131	Black	0.197	5.0	0.059 - 0.236	1.5 - 6.0	0.472	12.0	0.433	11.0	1000
TPSR100A	Natural	0.230	5.8	0.156	3.96	0.591	15.0	0.421	10.7	1000
USR-1132	Black	0.236	6.0	0.059 - 0.236	1.5 - 6.0	0.630	16.0	0.433	11.0	1000
TPSR105A	Natural	0.235	6.0	0.140	3.56	0.703	17.9	0.437	11.1	1000
USR-64125**	Black	0.250	6.4	0.126 - 0.172	3.2 - 4.4	0.594	15.1	0.500	12.7	500
TPSR110A	Natural	0.270	6.9	0.093	2.36	0.689	17.5	0.476	12.1	1000
USR-1133	Black	0.315	8.0	0.118 - 0.394	3.0 - 10.0	0.787	20.0	0.551	14.0	1000
USR-1*	Black	0.315	8.0	0.276 - 0.315	7.0 - 8.0	0.787	20.0	0.866	22.0	1000

RRR
Removable Rivet

Pin



Grommet



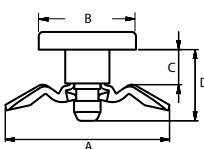
Specifications:

- Material: UL94 V-0 Nylon 66/6
- Color: Black

Features:

- Pin and grommet are supplied unassembled
- Pin is removable by pulling on the side tabs
- Can be used in a round or square hole

Item No.	Hole Size		Total Holding Thickness		A Ref.		Pack Qty.
	In	mm	In	mm	In	mm	
RRR-1	.188-.208 Ø or .177 Min. Square	4.76 - 5.28 Ø or 4.5 Min. Square	.059 - .138	1.5 - 3.5	.14	3.6	1000
RRR-2	.188-.208 Ø or .177 Min. Square	4.76 - 5.28 Ø or 4.5 Min. Square	.138 - .217	3.5 - 5.5	.17	4.4	1000

RFL Series
Folding Leg Rivet

Specifications:

- Material: Nylon 6/6
- Color: Natural or Black
- Flame Class: UL94V-2

Features:

- Pushing the pin in the rivet body causes the legs to expand and grip the material
- Once installed, the rivet cannot be removed from the outside of the box
- Can be used with cardboard boxes or other porous materials

Item No.	Hole Dia.		Panel Thickness		Ø B		A		Pack Qty.
	Natural	Black	In	mm	In	mm	In	mm	
RFL-1		RFL-1BK	0.220	0.110 - 0.150	0.430	0.730	0.290	1000	
RFL-2		RFL-2BK	0.220	0.140 - 0.180	0.430	0.730	0.320	1000	